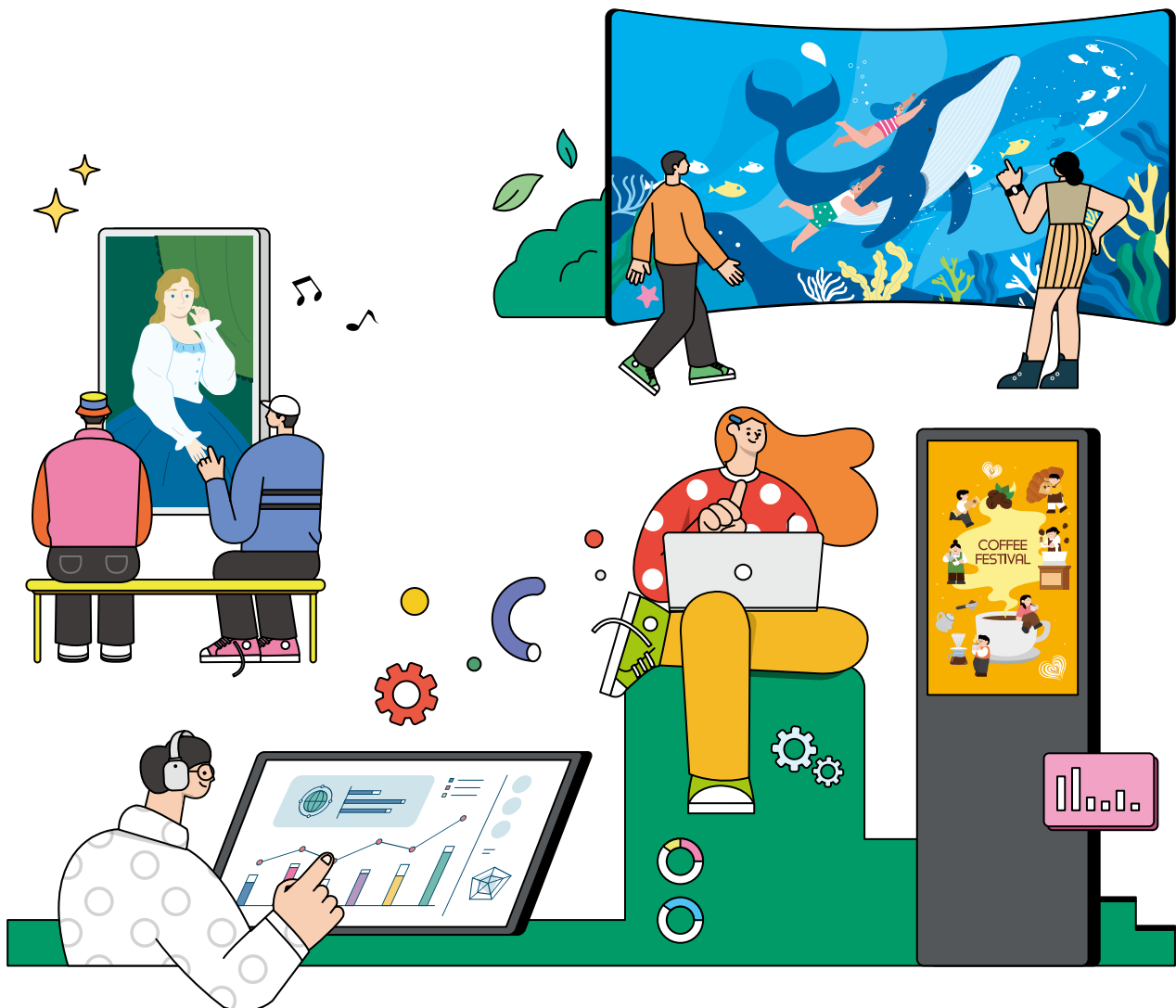


Digital Signage Specialist Company

SYSMATE CATALOG





CONTENTS

Digital Signage Manufacturing Technology for 12 Years, Leading in Technology, Market, and Social Contribution

With the development and release of digital signage products tailored for various places and industries, we provide optimal services based on the characteristics and purposes of each location.

01 SYSMATE INTRODUCTION

Company History	04
Patents and Certifications	05
Samsung Electronics Business Partner	06
SYSMATE POD	07

02 LED DISPLAY

Indoor LED Display	08
Outdoor LED Display	10

03 DIGITAL SIGNAGE

Lightweight Multi Vision	12
Stand Signage	14
Pivot Stand Signage	16
Touch Display	18
The Gallery Signage	20
Outdoor 55Inch Signage	22
Outdoor 75Inch Signage	23

04 SAMSUNG ELECTRONICS

Samsung Signage	24
-----------------	----

05 CUSTOM DEVELOPMENT

Custom Kiosk Production	26
Custom Solution Development	27

SYSMATE INTRODUCTION

Digital Signage Specialist Company, SYSMATE

SYSMATE is a specialized company that provides integrated solutions for the design, development, installation, and maintenance of digital signage products optimized for advertising and promotion. We offer digital signage, kiosks, and solutions to help realize customer value and needs.

SYSMATE Management Philosophy

From professional installation planning to user training, we promise the realization of perfect quality and the highest service value.

Competitiveness

By designing, manufacturing, and developing products entirely with our own technology and infrastructure, we take full responsibility for every process, ensuring seamless service from design to installation and maintenance.

Distinction

Utilizing new technologies and know-how from our 12 years of experience in developing and manufacturing digital signage, we continue to offer distinctive products that set us apart from the competition.

Innovation

With a fearless approach to challenges, we consistently strive for innovation, building strong market leadership to position ourselves as a frontrunner in the digital signage industry.

Persist

SYSMATE continues to challenge new fields, pursuing sustainable growth through ongoing research and development.

SYSMATE

Company History

2013 - 2015

- Established SYSMATE Co., Ltd. (2013)
- Set up a corporate R&D center / Built a factory
- Contracts for video information display devices through the Public Procurement Service (PPS)

2016 - 2018

- Achieved No. 1 sales in the video information display category in the Public Procurement Service (2017-2022)
- Acquired information communication construction license
- Obtained GS Grade 1 certification for signage solutions
- Selected as a promising company for overseas procurement markets (G-PASS)
- Signed contracts to supply signage to all floors of Naver headquarters and all branches of Samsung Life Insurance

2023 - Present

- Selected as a 2023 "Small but Strong Company" (by the Ministry of Employment and Labor)
- Recognized as an excellent venture company for continuous growth and job creation
- Selected as an Outstanding Industrial Design product (GD)
- 2024 Award for Distinguished Service to Small and Medium Enterprises (Citation of Prime Minister)
- Performance Certification (LED Display)
- Awarded 2024 Outstanding Venture Company
- Awarded 2025 Youth-Friendly SME (By MOEL & MSS)
- Awarded Seoul Work-Life Balance Point Company

2019 - 2022

- Awarded the 2019 Venture Startup Grand Prize (by the Minister of SMEs and Startups)
- Awarded the 17th Korea Startup Grand Prize (by the Minister of Trade, Industry, and Energy)
- Made Incheon International Airport T1 renovation project
- Selected as a 2020 Smart Store technology supplier
- Awarded by the Minister of SMEs and Startups in 2022 for SME contributions
- Selected as a 2022 Hi-Seoul Outstanding Company (by the Seoul Mayor)
- Obtained quality assurance procurement certification for video information display devices and interactive whiteboards

Patents and Certifications

Technology Patent Registration (22 types) (including applications)



In addition to the image information display device Patent No. 10-2386056

Design Patent Registration (9 types) (including applications)



An advertising platform with a display Design Registration No. 30-0978793

Program Registration (22 types) (including applications)



Signage Solutions et al No. C-2022-000143

Technical Certification (23 types) (including applications)



Software Quality Certification (GS Grade 1) No. 18-0272 (DIDMATE PLAYER v2.2.0)

Corporate certification (25 types) Award/marketing (11 types)



High Seoul Outstanding Enterprise (Seoul Mayor's Commendation)



2024 Small and Medium Enterprises Award for Merit (Citation of Prime Minister)



Awarded 2025 Youth-Friendly SME (By MOEL & MSS)

Proof of direct production confirmation (13 types)



Image information display device



Information system development service



Guide/weather/traffic information board

Company with Performance Certification of LED Display and Green Technology Certification

Sysmate is a trusted and certified company that has obtained both the Performance Certification (EPC) and Green Technology Certification. By combining outstanding product quality with excellent performance and eco-friendly technology, we maximize energy efficiency and deliver proven quality that helps realize our customers' future value.



Performance Certification

Awarded Performance Certification for incorporating an energy-saving system.



Green Technology Certification

Certification for technologies that minimize greenhouse gas and pollutant emissions while promoting the conservation and efficient use of energy and resources.



Performance Certification



Green Technology Certification

Samsung Electronics Business Partner

Sysmate, selected as a Samsung Electronics business partner, sells officially certified products from Samsung Electronics. Sysmate is a leading company in the digital signage industry, providing the highest level of services to customers by offering Samsung Electronics' business solutions through professional consultation and product sales.

Sysmate has over 10,000 unique installation and management experiences, specializing in comprehensive customer requirements like new installations, relocations, maintenance, and direct collaboration through various professional formats.



Clients and Partners



SYSMATE POD (Point of Difference)

Point 01. No.1 in Public Procurement Sector

- Designated as a "Quality Assurance Procurement Product" supplier by the Public Procurement Service (PPS) for video information display devices and interactive whiteboards.
- Ranked No.1 in market share (8 consecutive years) for video information display devices listed on the Nara Market Comprehensive Shopping Mall.
- Possesses 10 direct production verification certificates for hardware, 7 for software solutions, and 9 specialized licenses including telecommunications construction license.

Point 02. Industry's Only Fully Integrated Business Model

- Operates a one-stop integrated business covering development, manufacturing, sales, and service of both hardware and software for display systems.
- Offers 412 product lines with installation technologies tailored to client environments.
- All incoming and outgoing products are quality-checked under a professional quality control system.

Point 03. Exclusive Professional Customer Service System

- Operates a proprietary CRM-based customer service platform for real-time support and integrated case tracking.
- Manages a dedicated in-house call center infrastructure for inquiries related to products, services, and operations.
- Provides nationwide on-site services through a professional technical support team and over 220 partner service centers.

Point 04. Extensive Project Experience and Certifications

- Over 14,216 installation cases across public, educational, corporate, and distribution sectors.
- Successfully executed major national projects, including nationwide highway rest areas (Korea Expressway Corporation), Incheon International Airport T1 renewal, and Kia Motors nationwide dealerships.

ESG Management

With advanced technology and superior product and service offerings, Sysmate ensures stable, customer-friendly services, designated as "Consumer MATE."

“ Business MATE SYSMATE ”



Make the society a better place

Social Contribution

Responsibility to create a better world together.



Aware of our earth

Environmental Responsibility

Conducting advanced research for environmental preservation.



True enterprise, true management

Business Ethics

Reliable business management based on integrity.



Education for social equity

Social Equity Education

Developing an AI system to solve education disparities

INDOOR LED DISPLAY SERIES

Indoor LED Display with Immersive Visual Impact

The indoor LED display has a slim bezel-less design, offering a bright and vivid screen for immersive viewing. It enhances the elegance of spaces such as seminar rooms, banquet halls, and auditoriums with customized professional installations tailored to various spaces and forms.

Diverse Lineup

Various pixel pitch configurations for different usage purposes.

Custom Professional Design and Installation

Customized professional installation based on the customer's needs to fit specific spaces.

Easy Maintenance with Front Module Accessibility

Easy front module removal and maintenance.

Green Technology through Power Saving

Power-saving features using cathode circuits and white balance control technology.



Indoor LED Display References



Kia Motors
(SM-125H) Size : 4,879 x 2,744mm / Pixel Pitch : P1.25mm



K Square Magok
(SM-250H) Size : 5,280 x 2,400 mm / Pixel Pitch : P2.5mm



Shinsegae Department Store Centum City Branch
(SM-187H) Size : 960 x 8,160mm (6set) / Pixel Pitch : P1.87mm

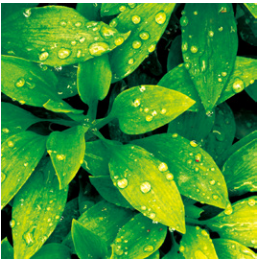


Dongdaemun Design Plaza Showroom
(SM-250H) Size : 5,760 x 2,400mm (2set) / Pixel Pitch : P2.5mm



Product Specifications (16:9 Cabinet)

Model	SM-125H	SM-156H	SM-187H
Pitch (mm)	P 1.25	P 1.56	P 1.87
LED Type	COB	SMD	SMD
Brightness	600 nit	600 nit	600 nit
Cabinet Size	600 x 337.5 x 31mm	600 x 337.5 x 31mm	600 x 337.5 x 31mm
Cabinet Resolution (Pixel)	480 x 270	384 x 216	320 x 180
Cabinet Weight	4.5 kg	4.05kg	4.05kg
Cabinet Rated Power Consumption	≤90W	≤90W	≤90W
Module Size	150 x 168.75mm	300 x 168.75mm	300 x 168.75mm
Number of Modules	8	4	4
Refresh Rate	3,840Hz	3,840Hz	3,840Hz
Operating System	(Options) Controller, (Options) Set-top box, (Options) CMS Program		



Product Specifications (1:1 Cabinet)

Model	SM-250H
Pitch (mm)	P 2.5
LED Type	SMD
Brightness	600 nit
Cabinet Size	480 x 480 x 50.8mm
Cabinet Resolution (Pixel)	192 x 192
Cabinet Weight	5.55kg
Cabinet Rated Power Consumption	≤120W
Module Size	240 x 240mm
Number of modules	4
Refresh Rate	3,840Hz
Operating System	(Options) Controller, (Options) Set-top box, (Options) CMS Program

OUTDOOR LED DISPLAY SERIES

Outdoor LED Display with High Brightness and Durability

The outdoor LED display provides high brightness and clear color reproduction regardless of the surrounding environmental conditions. With a waterproof and dustproof design and custom structures, it delivers intuitive information through direct viewing, even in outdoor environments.

Diverse Lineup

Offers a variety of pixel pitch configurations tailored to different use cases.

Custom Professional Design and Installation

Custom professional installations based on customer needs to fit specific spaces.

Easy Maintenance with Front Module Accessibility

Convenient front module removal for easy maintenance and repair.

Green Technology through Power Saving

Power-saving features using cathode circuits and white balance control technology.



Outdoor LED Display References



Nowon Culture and Arts Center
Size : 3,000 x 2,000mm / 3,750 x 2,000mm / Pixel Pitch : P3.9mm



Pacific Interchem Corporation
Size : 5,860 x 900mm / Pixel Pitch : P5mm



Gwacheon Knowledge Information Town
Size : 20,544 x 6,336mm / Pixel Pitch : P6mm

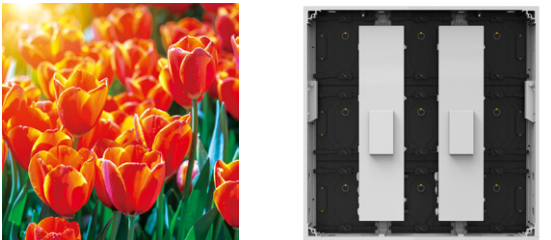


Chungju's Youth Street
Size : 18,000 x 1,500mm / Pixel Pitch : P3.9mm



Product Specifications (Pixel Pitch 2.6~3.9mm)

Model	OD-SM-2.6	OD-SM-2.9	OD-SM-3.9
Pitch (mm)	P 2.6	P 2.9	P 3.9
Brightness	4,000 nit	4,500 nit	4,500 nit
Refresh Rate	1,920~3,840Hz	1,920~3,840Hz	1,920~3,840Hz
Cabinet Size (mm)	500 x 500 (1 : 1)	500 x 500 (1 : 1)	500 x 500 (1 : 1)
Cabinet Resolution (Pixel)	192 x 192	168 x 168	128 x 128
Average Power Consumption	320W/m²	320W/m²	320W/m²
Maximum Power Consumption	800W/m²	800W/m²	800W/m²
Maintenance	Front	Front	Front
Viewing Angle	160°	160°	160°
Operating System	(Options) Controller, (Options) Set-top box, (Options) CMS Program		



Product Specifications (Pixel Pitch 6~10mm)

Model	OD-SM-6	OD-SM-8	OD-SM-10
Pitch (mm)	P 6	P 8	P 10
Brightness	6,000 nit	6,500 nit	8,000 nit
Refresh Rate	1,920~3,840Hz	1,920~3,840Hz	1,920~3,840Hz
Cabinet Size (mm)	960 x 960 (1 : 1)	960 x 960 (1 : 1)	960 x 960 (1 : 1)
Cabinet Resolution (Pixel)	160 x 160	128 x 128	96 x 96
Average Power Consumption	320W/m²	320W/m²	320W/m²
Maximum Power Consumption	800W/m²	800W/m²	800W/m²
Maintenance	Rear	Rear	Rear
Viewing Angle	160°	160°	160°
Operating System	(Options) Controller, (Options) Set-top box, (Options) CMS Program		

LIGHT WEIGHT MULTI VISION SERIES

Exceptional durability with ultra-slim bezel lightweight multi-vision

Using materials such as ABS plastic, this multi-vision is lighter and safer for installation while boasting excellent durability compared to conventional products.

Lightweight Slim Frame Model

The weight has been reduced by about 30% compared to conventional products, allowing for safe installation with reduced frame load.

ABS Material Application

The ABS plastic, which is strong against impact, is used for the outer frame, making it lighter and easier to install, while also improving the product's durability.



Lightweight Multi Vision Reference



Yonsei University Dental Clinic
(VW550R-5LW) 1rows 3columns, 3units / Bezel 0.88mm



Ildong Lake GC
(VW550R-5LW) 1rows 6columns, 6units / Bezel 0.88mm



BNC Korea
(VW550R-5LW) 2rows 2columns, 4units / Bezel 0.88mm



Dunsan Elif the Central Model House
(VW550R-5LW) 3rows 4columns, 12units / Bezel 0.88mm



Product Specifications (Bezel 0.88mm)

Inch	55 Inch (Razor Narrow Bezel)	
Model	VW550R-5LW	VW550R-7LW
Bezel	0.88 mm	0.88 mm
Brightness	500 nit	700 nit
Contrast Ratio	1,100:1	1,100:1
Weight	18.5 kg	18.1 kg
Dimensions(mm) WxHxD	1210.51 x 681.22 x 92.4	1210.51 x 681.22 x 92.4
Resolution	1920 x 1080 (FHD)	1920 x 1080 (FHD)
Mounting Size(mm)	600 x 400	600 x 400
Input Terminal	HDMI x 2, DP IN x 1, RS232 IN x 1, IR IN x 1	
Output Terminal	DP OUT x 1, RS232 OUT x 1	
PC (Optional)	Intel i3 12th Gen and up / RAM 8GB, SSD 128GB and up / Windows 11 Pro and up (PC mounting may vary based on specifications.)	



Product Specifications (Bezel 2.6mm)

Inch	55 Inch (Extreme Narrow Bezel)	
Model	VW550E-5LW	VW550E-7LW
Bezel	2.6 mm	2.6 mm
Brightness	500 nit	700 nit
Contrast Ratio	1,000:1	1,000:1
Weight	19.6 kg	19.7 kg
Dimensions(mm) WxHxD	1212.2 x 683 x 92.5	1212.2 x 683 x 92.5
Resolution	1920 x 1080 (FHD)	1920 x 1080 (FHD)
Mounting Size(mm)	600 x 400	600 x 400
Input Terminal	HDMI x 2, DP IN x 1, RS232 IN x 1, IR IN x 1	
Output Terminal	DP OUT x 1, RS232 OUT x 1	
PC (Optional)	Intel i3 12th Gen and up / RAM 8GB, SSD 128GB and up / Windows 11 Pro and up (PC mounting may vary based on specifications.)	

STAND SIGNAGE

Samsung Smart Signage and kiosk-integrated stand signage

With 4K UHD high resolution, Samsung’s stand signage of this series is designed to integrate with Samsung Smart Signage and kiosks seamlessly. It blends well with interiors, providing a more elegant and convenient customer experience.

USB Input (U TYPE)

Media content can be played via USB storage - Easy connection.

MagicInfo Premium (Network Type / Optional)

USB or network-based PC connection allows remote content control and management.

Web Viewing UI

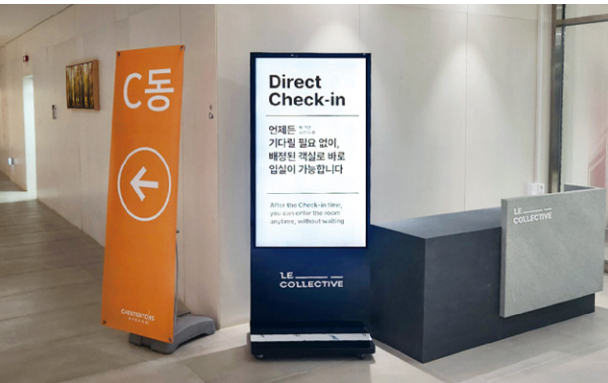
Supports web-based content connection and viewing.

Touch Screen (Optional)

Adding infrared touch sensor allows using the device as a touch kiosk.



Stand Signage Reference



Le Collective Hotel
(QB550CS) 55Inch / 4K UHD / 350nit



Yonsei The Baro Hospital
(QM500CS) 50Inch / 4K UHD / 500nit



Lotte World Mall
(QM550CS) 55Inch / 4K UHD / 500nit



Champuren Global CO.,Ltd.,
(QH650CS) 65Inch / 4K UHD / 700nit

Product Specifications (QBS SERIES)

Inch	43Inch	50Inch	55Inch	65Inch	75Inch
Model	QB430CS	QB500CS	QB550CS	QB650CS	QB750CS
	LH43QBCEBGCXKR	LH50QBCEBGCXKR	LH55QBCEBGCXKR	LH65QBCEBGCXKR	LH75QBCEBGCXKR
Resolution	3840 x 2160 (4K UHD)				
Brightness	350 nit				
Contrast Ratio	4,000:1				
Haze	Glare				
Input Type	USB Input (default) / NETWORK (optional)				
MagicINFO Premium	Optional (Network remote control content management)				
USB Ports	USB x 1 (USB Input) / USB x 2, RJ45 (NETWORK)				
Dimensions (mm)	585 x 1900 x 497.6	691 x 1900 x 497.6	740 x 1900 x 497.6	900 x 1940 x 497.6	1015 x 2090 x 560
Touchscreen Option	IR (for kiosk utilization)				

Product Specifications (QMS SERIES)

Inch	32Inch	43Inch	50Inch	55Inch	65Inch	75Inch
Model	QM320CS	QM430CS	QM500CS	QM550CS	QM650CS	QM750CS
	LH32QMCEBGCXKR	LH43QMCEBGCXKR	LH50QMCEBGCXKR	LH55QMCEBGCXKR	LH65QMCEBGCXKR	LH75QMCEBGCXKR
Resolution	1920 x 1080 (FHD)	3840 x 2160 (4K UHD)				
Brightness	400 nit	500 nit				
Contrast Ratio	4,000:1	4,000:1				
Haze	Glare	Non-Glare				
Input Type	USB Input (default) / NETWORK (optional)					
MagicINFO Premium	Optional (Network remote control content management)					
USB Ports	USB x 1 (USB Input) / USB x 2, RJ45 (NETWORK)					
Dimensions (mm)	470 x 1594.2 x 497.6	585 x 1900 x 497.6	691 x 1900 x 497.6	740 x 1900 x 497.6	900 x 1940 x 497.6	1015 x 2090 x 560
Touchscreen Option	IR (for kiosk utilization)					

Product Specifications (QHS SERIES)

Inch	43Inch	50Inch	55Inch	65Inch	75Inch
Model	QH430CS	QH500CS	QH550CS	QH650CS	QH750CS
	LH43QHCEBGCXKR	LH50QHCEBGCXKR	LH55QHCEBGCXKR	LH65QHCEBGCXKR	LH75QHCEBGCXKR
Resolution	3840 x 2160 (4K UHD)				
Brightness	700 nit				
Contrast Ratio	4,000:1				
Haze	Non-Glare				
Input Type	USB Input (default) / NETWORK (optional)				
MagicINFO Premium	Optional (Network remote control content management)				
USB Ports	USB x 1 (USB Input) / USB x 2, RJ45 (NETWORK)				
Dimensions (mm)	585 x 1900 x 497.6	691 x 1900 x 497.6	740 x 1900 x 497.6	900 x 1940 x 497.6	1015 x 2090 x 560
Touchscreen Option	IR (for kiosk utilization)				

PIVOT STAND SIGNAGE

Pivot stand signage allowing free rotation to landscape or portrait mode depending on the content

The pivot stand signage allows free rotation of the screen depending on the format of the content. It can be installed in various spaces without difficulty and is an ideal solution for convenient viewing with easy rotation in both horizontal and vertical modes.

- USB Input (U Type)**
Convenient media playback through USB storage connection.
- Android Network (N Type)**
USB support and remote content control via PC network.
- Windows (P Type)**
Full compatibility with Windows OS for flexible operation.
- Touch Screen (PT Type)**
The optional IR touch sensor adds touch functionality, allowing use as a touch kiosk.



Pivot Stand Signage References



Korea Steel Co., Ltd
(DS490PP) 49Inch / 4K UHD / 500nit



KTE Co., Ltd
(DS490PP) 49Inch / 4K UHD / 500nit



Aerix Inc
(DS550PU) 55Inch / 4K UHD / 500nit



Jiwoo Hospital
(DS550PU) 55Inch / 4K UHD / 500nit

Product Specifications (43Inch)

Model	DS430PU	DS430PN	DS430PP	DS430PPT
Resolution	3,840 x 2,160 (4K UHD)	3,840 x 2,160 (4K UHD)	3,840 x 2,160 (4K UHD)	3,840 x 2,160 (4K UHD)
Brightness	500 nit	500 nit	500 nit	500 nit
Contrast Ratio	1,000:1	1,000:1	1,000:1	1,000:1
Input	USB INPUT	ANDROID	PC	PC TOUCH
Touch Sensitivity / Response Time	N/A	N/A	N/A	IR Touch 10 Point/10ms
Solution (Optional)	Network remote control solution *Contact for details			
I/O Ports	USB x 1	USB x 2, RJ45	USB x 2, RJ45	USB x 2, RJ45
Dimensions (WxHxD) (Horizontal mounting type)	1000.6 x 1575.9 x 497.6mm			
Dimensions (WxHxD) (vertically mounted type)	589.6 x 1781.4 x 497.6mm			

Product Specifications (49Inch)

Model	DS490PU	DS490PN	DS490PP	DS490PPT
Resolution	3,840 x 2,160 (4K UHD)	3,840 x 2,160 (4K UHD)	3,840 x 2,160 (4K UHD)	3,840 x 2,160 (4K UHD)
Brightness	500 nit	500 nit	500 nit	500 nit
Contrast Ratio	1,000:1	1,000:1	1,000:1	1,000:1
Input	USB INPUT	ANDROID	PC	PC TOUCH
Touch Sensitivity (Response Time)	N/A	N/A	N/A	IR Touch 10 Point/10ms
Solution (Optional)	Network remote control solution *Contact for details			
I/O Ports	USB x 1	USB x 2, RJ45	USB x 2, RJ45	USB x 2, RJ45
Dimensions (WxHxD) (Horizontal mounting type)	1124 x 1608.1 x 497.6mm			1136.6 x 1613.4 x 497.6mm
Dimensions (WxHxD) (vertically mounted type)	654 x 1843.1 x 497.6mm			664.6 x 1849.4 x 497.6mm

Product Specifications (55Inch)

Model	DS550PU	DS550PN	DS550PP	DS550PPT
Resolution	3,840 x 2,160 (4K UHD)	3,840 x 2,160 (4K UHD)	3,840 x 2,160 (4K UHD)	3,840 x 2,160 (4K UHD)
Brightness	500 nit	500 nit	500 nit	500 nit
Contrast Ratio	1,000:1	1,000:1	1,000:1	1,000:1
Input	USB INPUT	ANDROID	PC	PC TOUCH
Touch Sensitivity (Response Time)	N/A	N/A	N/A	IR Touch 10 Point/10ms
Solution (Optional)	Network remote control solution *Contact for details			
I/O Ports	USB x 1	USB x 2, RJ45	USB x 2, RJ45	USB x 2, RJ45
Dimensions (WxHxD) (Horizontal mounting type)	1258 x 1650.1 x 497.6mm			1278 x 1655.1 x 497.6mm
Dimensions (WxHxD) (vertically mounted type)	738 x 1910.1 x 497.6mm			748 x 1920.1 x 497.6mm

TOUCH DISPLAY

Samsung Smart Signage with integrated IR Touch – Q Series Touch Display

This Q Series touch display combines Samsung's smart signage with 4K UHD resolution and IR touch technology with 10-point touch capability. It is a versatile product that can be used for advertising and promotions, as well as for business or educational monitoring through a web-based environment.

4K UHD High-Resolution Content Playback

Deliver high-definition content with 4K UHD resolution for optimal clarity.

Various External Device Connections Supported

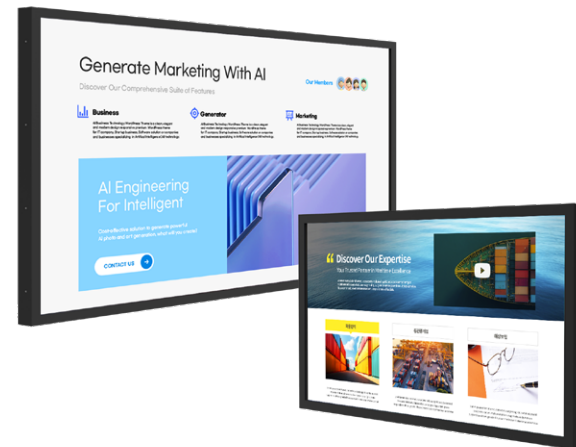
Compatible with PC, IPTV, and external devices via multiple input ports for flexible operations.

Web Viewing (Web Browser)

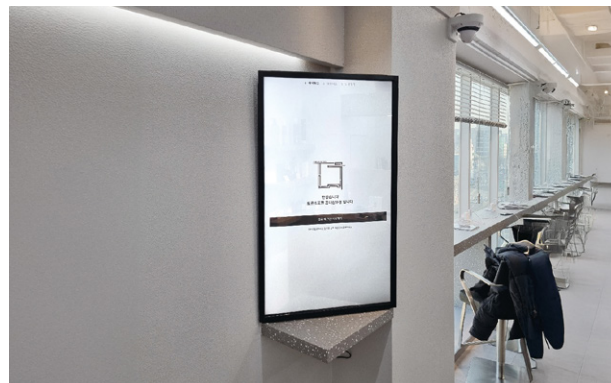
Web browsing capabilities without the need for a separate PC or set-top box.

Touch Screen (Touchscreen)

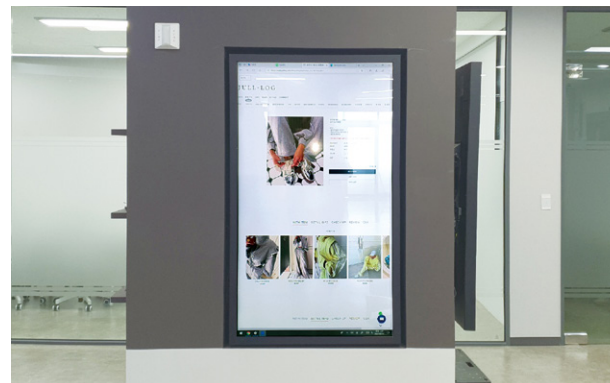
Optional IR touch sensors add touch functionality, allowing for use as a touch kiosk.



Touch Display References



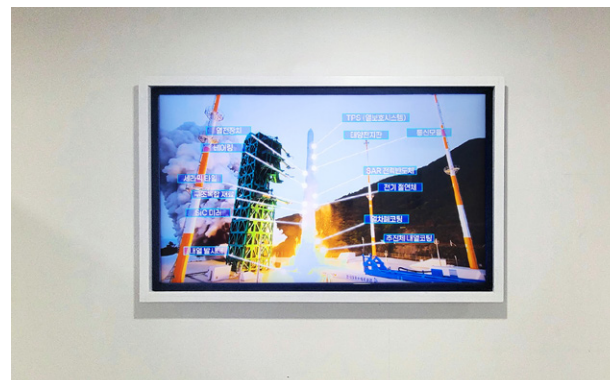
Torso For man
(QB43C_IR) 43Inch / 4K UHD / 350nit



SAEGIL Co., Ltd
(QB55C_IR) 55Inch / 4K UHD / 350nit



Kyobo Life Insurance Co., Ltd
(QM55C_IR) 55Inch / 4K UHD / 500nit



Korea Ceramic Technology Institute
(QH75C_IR) 75Inch / 4K UHD / 700nit

Product Specifications (QB-IR SERIES)

Inch	Model	Resolution (Brightness)	Contrast Ratio	Touch Type / Response Time	Dimensions(WxHxD) / Vesa(mm)	USB Ports
43 Inch	QB43C_IR	3840 x 2160 (350 nit)	4,000:1	IR TOUCH 10 Point / 8ms (Typ.)	1008 x 596.4 x 50 / 200 x 200	HDMI(3), USB(1), RS232, RJ45
	LH43QBCEBGCXKR					
50 Inch	QB50C_IR	3840 x 2160 (350 nit)	4,000:1	IR TOUCH 10 Point / 8ms (Typ.)	1173 x 686.3 x 50 / 200 x 200	
	LH50QBCEBGCXKR					
55 Inch	QB55C_IR	3840 x 2160 (350 nit)	4,000:1	IR TOUCH 10 Point / 8ms (Typ.)	1279 x 751 x 50 / 200 x 200	
	LH55QBCEBGCXKR					
65 Inch	QB65C_IR	3840 x 2160 (350 nit)	4,000:1	IR TOUCH 10 Point / 8ms (Typ.)	1496.4 x 871 x 50 / 400 x 300	
	LH65QBCEBGCXKR					
75 Inch	QB75C_IR	3840 x 2160 (350 nit)	4,000:1	IR TOUCH 10 Point / 8ms (Typ.)	1718 x 994 x 60 / 400 x 400	
	LH75QBCEBGCXKR					
85 Inch	QB85C_IR	3840 x 2160 (350 nit)	4,000:1	IR TOUCH 10 Point / 8ms (Typ.)	1946.2 x 1125 x 60 / 600 x 400	
	LH85QBCEBGCXKR					

Product Specifications (QM-IR SERIES)

Inch	Model	Resolution (Brightness)	Contrast Ratio	Haze	Touch Type / Response Time	Dimensions(W x H x D) / Vesa(mm)	USB Ports
32 Inch	QM32C_IR LH32QMCEBGCXKR	1920 x 1080 (400 nit)	4,000:1	Glare	IR TOUCH 10 Point / 8ms (Typ.)	766.5 x 460.5 x 50 / 100 x 100	HDMI(3), USB(1), RS232, RJ45
43 Inch	QM43C_IR LH43QMCEBGCXKR	3840 x 2160 (500 nit)	4,000:1	Non-Glare	IR TOUCH 10 Point / 8ms (Typ.)	1008 x 596.4 x 50 / 200 x 200	
50 Inch	QM50C_IR LH50QMCEBGCXKR	3840 x 2160 (500 nit)	4,000:1	Non-Glare	IR TOUCH 10 Point / 8ms (Typ.)	1173 x 686.3 x 50 / 200 x 200	
55 Inch	QM55C_IR LH55QMCEBGCXKR	3840 x 2160 (500 nit)	4,000:1	Non-Glare	IR TOUCH 10 Point / 8ms (Typ.)	1279 x 751 x 50 / 200 x 200	
65 Inch	QM65C_IR LH65QMCEBGCXKR	3840 x 2160 (500 nit)	4,000:1	Non-Glare	IR TOUCH 10 Point / 8ms (Typ.)	1496.4 x 871 x 50 / 400 x 300	
75 Inch	QM75C_IR LH75QMCEBGCXKR	3840 x 2160 (500 nit)	4,000:1	Non-Glare	IR TOUCH 10 Point / 8ms (Typ.)	1718 x 994 x 60 / 400 x 400	
85 Inch	QM85C_IR LH85QMRBBGCXKR	3840 x 2160 (500 nit)	4,000:1	Non-Glare	IR TOUCH 10 Point / 8ms (Typ.)	1946.2 x 1125 x 60 / 600 x 400	

Product Specifications (QH-IR SERIES)

Inch	Model	Resolution (Brightness)	Contrast Ratio	Haze	Touch Type / Response Time	Dimensions(W x H x D) / Vesa(mm)	USB Ports
43 Inch	QH43C_IR	3840 x 2160 (700 nit)	4,000:1	Non-Glare	IR TOUCH 10 Point / 8ms (Typ.)	1008 x 596.4 x 50 / 200 x 200	HDMI(3), USB(1), RS232, RJ45
	LH43QHCEBGCXKR						
50 Inch	QH50C_IR	3840 x 2160 (700 nit)	4,000:1	Non-Glare	IR TOUCH 10 Point / 8ms (Typ.)	1173 x 686.3 x 50 / 200 x 200	
	LH50QHCEBGCXKR						
55 Inch	QH55C_IR	3840 x 2160 (700 nit)	4,000:1	Non-Glare	IR TOUCH 10 Point / 8ms (Typ.)	1279 x 751 x 50 / 200 x 200	
	LH55QHCEBGCXKR						
65 Inch	QH65C_IR	3840 x 2160 (700 nit)	4,000:1	Non-Glare	IR TOUCH 10 Point / 8ms (Typ.)	1496.4 x 871 x 50 / 400 x 300	
	LH65QHCEBGCXKR						
75 Inch	QH75C_IR	3840 x 2160 (700 nit)	4,000:1	Non-Glare	IR TOUCH 10 Point / 8ms (Typ.)	1718 x 994 x 60 / 400 x 400	
	LH75QHCEBGCXKR						

THE GALLERY SIGNAGE

Samsung Smart Signage combined with frame aesthetics – Q Series Digital Frame

This Q Series digital frame combines Samsung’s superior 4K UHD display technology with elegant picture frames, allowing you to display art and other content seamlessly, from fine art galleries to everyday spaces and exhibitions.

USB Input (U TYPE)

Easily load and play media content via USB storage.

MagicInfo Premium (Optional Network)

Network connection and remote content control via PC available through the network option.

Vibrant Color Expression

10-bit color depth delivers precise color expression and allows you to enjoy highly detailed content reproduction.

UHD Upscaling

AI-based upscaling technology automatically converts lowerresolution content to high-quality UHD, providing a better viewing experience.



THE GALLERY References



Roofcatme
(QB50F_WTE) 50Inch / 4K UHD / 350nit



Zaksim Lounge
(QM55F_WTE) 55Inch / 4K UHD / 500nit



Ember women clinic
(QH50F_WTE) 50Inch / 4K UHD / 700nit



Songdo Lux Ocean SK View Apartment
(QH55F_WTE) 55Inch / 4K UHD / 700nit

Product Specifications (QB SERIES)

Inch	43Inch	50Inch	55Inch	65Inch
Model	QB43F_WTE	QB50F_WTE	QB55F_WTE	QB65F_WTE
	LH43QBCEBGCXKR	LH50QBCEBGCXKR	LH55QBCEBGCXKR	LH65QBCEBGCXKR
Frame Color	White	White	White	White
Resolution	3840 x 2160 (4K UHD)			
Brightness	350 nit			
Haze	Glare			
Contrast Ratio	4,000:1			
Input Type	USB Input (default) / NETWORK (optional)			
USB Ports	HDMI x 2, USB x 2, RS232, RJ45			
Dimensions (WxHxD)	978.8 x 567 x 37mm	1133.3 x 654 x 37mm	1247.2 x 718 x 37mm	1466 x 841 x 37mm
Vesa(mm)	200 x 200	200 x 200	200 x 200	400 x 300

Product Specifications (QM SERIES)

Inch	32Inch	43Inch	50Inch	55Inch	65Inch
Model	QM32F_WTE	QM43F_WTE	QM50F_WTE	QM55F_WTE	QM65F_WTE
	LH32QMCEBGCXKR	LH43QMCEBGCXKR	LH50QMCEBGCXKR	LH55QMCEBGCXKR	LH65QMCEBGCXKR
Frame Color	White	White	White	White	White
Resolution	1920 x 1080 (FHD)	3840 x 2160 (4K UHD)			
Brightness	400 nit	500 nit			
Haze	Glare	Non-Glare			
Contrast Ratio	4,000:1				
Input Type	USB Input (default) / NETWORK (optional)				
USB Ports	HDMI x 2, USB x 2, RS232, RJ45				
Dimensions (WxHxD)	736.6 x 431 x 37mm	978.8 x 567 x 37mm	1133.3 x 654 x 37mm	1247.2 x 718 x 37mm	1466 x 841 x 37mm
Vesa(mm)	100 x 100	200 x 200	200 x 200	200 x 200	400 x 300

Product Specifications (QH SERIES)

Inch	43Inch	50Inch	55Inch	65Inch
Model	QH43F_WTE	QH50F_WTE	QH55F_WTE	QH65F_WTE
	LH43QHCEBGCXKR	LH50QHCEBGCXKR	LH55QHCEBGCXKR	LH65QHCEBGCXKR
Frame Color	White	White	White	White
Resolution	3840 x 2160 (4K UHD)			
Brightness	700 nit			
Haze	Non-Glare			
Contrast Ratio	4,000:1			
Input Type	USB Input (default) / NETWORK (optional)			
USB Ports	HDMI x 2, USB x 2, RS232, RJ45			
Dimensions (WxHxD)	978.8 x 567 x 37mm	1133.3 x 654 x 37mm	1247.2 x 718 x 37mm	1466 x 841 x 37mm
Vesa(mm)	200 x 200	200 x 200	200 x 200	400 x 300

OD550 SERIES

Outdoor signage with outstanding durability and superior brightness, featuring a center-type screen

With IP 45-rated water, dust, and moisture resistance, this signage protects against extreme environmental conditions such as rain, snow, dust, and sunlight, while maintaining durability and high-quality display. It is ideal for outdoor advertising, information displays, and other public-facing content.

Applied with High-Brightness Displays

Optimized for outdoor environments, offering a brightness level of 2,500 nits, ensuring excellent visibility even in direct sunlight.

IP 45-Certified Protection

Protects from external elements like water, dust, and moisture, ensuring safe operation in harsh environments.

Automatic Temperature Control System

The signage includes a cooling system with sensors that maintain the internal temperature, automatically adjusting as necessary.

Convenient Front Access for Maintenance

The front door allows easy access for repairs, making it simple to manage and maintain the system.



Product Specifications

Inch		55Inch			
Type		Outdoor Stand Type		Outdoor Wall-Mount Type	
Model		ODS550P	ODS550PT	ODW550P	ODW550PT
Resolution		1,920 x 1,080 (FHD)		1,920 x 1,080 (FHD)	
Brightness		2,500 nit		2,500 nit	
Contrast Ratio		1,200:1 (Typ)		4,000:1 (Typ)	
Touch Type		N/A	PCAP Touch (10 Point)	N/A	PCAP Touch (10 Point)
Dimensions(mm) W x H x D		860 x 1970 x 500		1410 x 1023.8 x 270	
System Secifications	PC	Intel i3 7th Gen and up / RAM 8GB / SSD 128GB and up		Intel i3 7th Gen and up / RAM 8GB / SSD 128GB and up	
	O/S	Windows 11 Pro and up		Windows 11 Pro and up	
Temerature Control System (Fan Cooling)	Digital thermometer	Includes alarm setting (-50°~150°)		Includes alarm setting (-50°~150°)	
	FAN	120Ø DC 12V / 90Ø DC 12V		120Ø DC 12V / 90Ø DC 12V	
	Relay	DC 12V		DC 12V	
	Power	DC 12V / 8.5A		DC 12V / 8.5A	
Mechanical Secifications	Temere glass	UV & IR GLASS 5.0T		UV & IR GLASS 5.0T	
	Filter	Dust filter 5.0T		Dust filter 5.0T	
	Door	Front Door Open		Front Door Open	

OD750 SERIES

Optimized design for outdoor use with IP65-rated durability and resistance

With IP 65-certified protection, this signage is suited for outdoor installations in places exposed to extreme environmental conditions such as rain, snow, dust, and high heat. The ultra-high brightness display ensures visibility even in direct sunlight.

Ultra-High Brightness Display

Offering brightness levels of 3,000 nits, optimized for outdoor environments with superior visibility.

Light Intensity Sensor-Based Auto Brightness Adjustment

Automatically adjusts brightness according to the surrounding light for optimal viewing.

IP 65-Certified Dust and Waterproof Protection

Certified for protection against water and dust, providing reliable operation even in harsh outdoor conditions.

Automatic Temperature Control System

Includes a smart cooling system that automatically adjusts according to the internal temperature.

Convenient Front Access for Maintenance

The front-access design ensures easy maintenance and repair, reducing downtime.



Product Specifications

Inch		75Inch			
Type		Outdoor Wall-Mount Type		Outdoor Stand Type	
Model		ODW750P	ODS750P	ODS750PT	
Resolution		3,840 x 2,160 (4K UHD)		3,840 x 2,160 (4K UHD)	
Brightness		3,000 nit		3,000 nit	
Contrast Ratio		1,200:1 (Typ)		1,200:1 (Typ)	
Touch Type		N/A		N/A	PCAP Touch (10 Point)
Dimensions(mm) W x H x D		1850 x 1270 x 270		1140 x 2200 x 600	
System Secifications	PC	Intel i3 7th Gen and up / RAM 8GB / SSD 128GB and up		Intel i3 7th Gen and up / RAM 8GB / SSD 128GB and up	
	O/S	Windows 11 Pro and up		Windows 11 Pro and up	
Temerature Control System (Fan Cooling)	Digital thermometer	Includes alarm setting (-50°~150°)		Includes alarm setting (-50°~150°)	
	FAN	120Ø DC 12V / 90Ø DC 12V		120Ø DC 12V / 90Ø DC 12V	
	Relay	DC 12V		DC 12V	
	Power	12V / 8.5A		12V / 8.5A	
Mechanical Secifications	Temere glass	UV & IR GLASS 5.0T		UV & IR GLASS 5.0T	
	Filter	Dust filter 5.0T		Dust filter 5.0T	
	Door	Front Door Open		Front Door Open	

SAMSUNG SIGNAGE SERIES

Samsung Smart Signage, boasting vibrant picture quality and outstanding durability

Samsung's signage offers a bezel-less design that blends seamlessly into any space, delivering an impressive visual impact. As the No. 1 brand in the world for business solutions, Samsung, together with its partner SYSMATE, provides optimal products and services tailored to customer environments.

USB Input (U TYPE)

Easily play content via USB storage.

MagicInfo Premium (Optional Network)

Enables remote content control through a PC connected to the network.

Playback for more than 16 hours, 7 consecutive days

Stable operation for over 16 hours of daily playback.

UHD Upscaling

AI-based upscaling technology automatically converts lower-resolution content to UHD quality, enhancing the viewing experience.



Samsung Signage References



Busan Sajik Stadium
(QB75C) 75Inch / 4K UHD / 350nit



Edinburgh Club
(QM75C) 75Inch / 4K UHD / 500nit



Hyundai Mobis
(QM85C) 85Inch / 4K UHD / 500nit



Hotel Emplaza Solaria
(QH65C) 65Inch / 4K UHD / 700nit

Product Specifications (QE SERIES)

Inch	Model	Resolution(Brightness)	Contrast Ratio	Haze	Operating Type	Dimensions(WxHxD) / Vesa(mm)	USB Ports
43Inch	QE43T	3840 x 2160 (300 nit)	4,000:1	Glare	USB INPUT (default) / NETWORK (optional)	963.9 x 558.9 x 59.6 / 200 x 200	HDMI(2), USB, RS232, RJ45
	LH43QETELGCXKR						
50Inch	QE50T	3840 x 2160 (300 nit)	4,000:1	Glare	USB INPUT (default) / NETWORK (optional)	1116.8 x 644.2 x 59.9 / 200 x 200	
	LH50QETELGCXKR						
55Inch	QE55T	3840 x 2160 (300 nit)	4,000:1	Glare	USB INPUT (default) / NETWORK (optional)	1230.5 x 707.2 x 59.9 / 200 x 200	
	LH55QETELGCXKR						
65Inch	QE65T	3840 x 2160 (300 nit)	1,200:1	Glare	USB INPUT (default) / NETWORK (optional)	1449.4 x 830.3 x 59.9 / 400 x 300	
	LH65QETELGCXKR						
75Inch	QE75T	3840 x 2160 (300 nit)	1,200:1	Glare	USB INPUT (default) / NETWORK (optional)	1673.2 x 958.2 x 59.9 / 400 x 400	
	LH75QETEPGCXKR						

Product Specifications (QB SERIES)

Inch	Model	Resolution (Brightness)	Contrast Ratio	Haze	Operating Type	Dimensions(WxHxD) / Vesa(mm)	USB Ports
43Inch	QB43C	3840 x 2160 (350 nit)	4,000:1	Glare	USB INPUT (default) / NETWORK (optional)	969.5 x 557.8 x 28.5 / 200 x 200	HDMI(3), USB(2), RS232, RJ45
	LH43QBCBEGCXXR						
50Inch	QB50C	3840 x 2160 (350 nit)	4,000:1	Glare	USB INPUT (default) / NETWORK (optional)	1124.1 x 644.8 x 28.5 / 200 x 200	
	LH50QBCBEGCXXR						
55Inch	QB55C	3840 x 2160 (350 nit)	4,000:1	Glare	USB INPUT (default) / NETWORK (optional)	1237.9 x 708.8 x 28.5 / 200 x 200	
	LH55QBCBEGCXXR						
65Inch	QB65C	3840 x 2160 (350 nit)	4,000:1	Glare	USB INPUT (default) / NETWORK (optional)	1456.8 x 831.9 x 28.5 / 400 x 300	
	LH65QBCBEGCXXR						
75Inch	QB75C	3840 x 2160 (350 nit)	4,000:1	Glare	USB INPUT (default) / NETWORK (optional)	1682.3 x 960.4 x 28.5 / 400 x 400	
	LH75QBCBEGCXXR						
85Inch	QB85C	3840 x 2160 (350 nit)	4,000:1	Glare	USB INPUT (default) / NETWORK (optional)	1904.3 x 1085.3 x 28.5 / 600 x 400	
	LH85QBCBEGCXXR						

Product Specifications (QM SERIES)

Inch	Model	Resolution (Brightness)	Contrast Ratio	Haze	Operating Type	Dimensions(WxHxD) / Vesa(mm)	USB Ports
32Inch	QM32C	1920 x 1080 (400 nit)	4,000:1	Glare	USB INPUT (default) / NETWORK (optional)	727.3 x 421.9 x 28.5 / 100 x 100	HDMI(3), USB(2), RS232, RJ45
	LH32QMCEBGCXKR						
43Inch	QM43C	3840 x 2160 (500 nit)	4,000:1	Non-Glare	USB INPUT (default) / NETWORK (optional)	969.5 x 557.8 x 28.5 / 200 x 200	
	LH43QMCEBGCXKR						
50Inch	QM50C	3840 x 2160 (500 nit)	4,000:1	Non-Glare	USB INPUT (default) / NETWORK (optional)	1124.1 x 644.8 x 28.5 / 200 x 200	
	LH50QMCEBGCXKR						
55Inch	QM55C	3840 x 2160 (500 nit)	4,000:1	Non-Glare	USB INPUT (default) / NETWORK (optional)	1237.9 x 708.8 x 28.5 / 200 x 200	
	LH55QMCEBGCXKR						
65Inch	QM65C	3840 x 2160 (500 nit)	4,000:1	Non-Glare	USB INPUT (default) / NETWORK (optional)	1456.8 x 831.9 x 28.5 / 400 x 300	
	LH65QMCEBGCXKR						
75Inch	QM75C	3840 x 2160 (500 nit)	4,000:1	Non-Glare	USB INPUT (default) / NETWORK (optional)	1682.3 x 960.4 x 28.5 / 400 x 400	
	LH75QMCEBGCXKR						
85Inch	QM85C	3840 x 2160 (500 nit)	4,000:1	Non-Glare	USB INPUT (default) / NETWORK (optional)	1904.3 x 1085.3 x 28.5 / 600 x 400	
	LH85QMCEBGCXKR						
98Inch	QM98C	3840 x 2160 (500 nit)	5,500:1	Non-Glare	USB INPUT (default) / NETWORK (optional)	2193.2 x 1248.8 x 48.1 / 600 x 400	
	LH98QMCEBGCXKR						

Product Specifications (QH SERIES)

Inch	Model	Resolution (Brightness)	Contrast Ratio	Haze	Operating Type	Dimensions(WxHxD) / Vesa(mm)	USB Ports
43Inch	QH43C	3840 x 2160 (700 nit)	4,000:1	Non-Glare	USB INPUT (default) / NETWORK (optional)	969.5 x 557.8 x 28.5 / 200 x 200	HDMI(3), USB(2), RS232, RJ45
	LH43QHCEBGCXKR						
50Inch	QH50C	3840 x 2160 (700 nit)	4,000:1	Non-Glare	USB INPUT (default) / NETWORK (optional)	1124.1 x 644.8 x 28.5 / 200 x 200	
	LH50QHCEBGCXKR						
55Inch	QH55C	3840 x 2160 (700 nit)	4,000:1	Non-Glare	USB INPUT (default) / NETWORK (optional)	1237.9 x 708.8 x 28.5 / 200 x 200	
	LH55QHCEBGCXKR						
65Inch	QH65C	3840 x 2160 (700 nit)	4,000:1	Non-Glare	USB INPUT (default) / NETWORK (optional)	1456.8 x 831.9 x 28.5 / 400 x 300	
	LH65QHCEBGCXKR						
75Inch	QH75C	3840 x 2160 (700 nit)	4,000:1	Non-Glare	USB INPUT (default) / NETWORK (optional)	1682.3 x 960.4 x 28.5 / 400 x 400	
	LH75QHCEBGCXKR						

CUSTOM KIOSK MANUFACTURING

Custom kiosk manufacturing involves designing, developing, producing, and installing kiosks optimized to meet customer needs, including design, functionality, installation location, usage environment, and product maintenance.

We provide end-to-end solutions, from consulting to final installation, leveraging our 10 years of experience in customized kiosk development and our know-how in advertising and marketing to support customer success.

Note: Custom orders can be made for quantities starting from a single unit.

Custom Manufacturing Process

STEP 01.

Consultation

Assess customer needs and requirements for kiosk functionality and design.

STEP 02.

Display and Screen Size Selection

Determine the appropriate display type and screen size based on customer needs.

STEP 03.

Functionality and Usage Selection

Choose the required features such as USB, Network, PC, and Touch functions depending on the application.

STEP 04.

Module and Additional Device Selection

Select additional features such as NFC, barcode readers, receipt printers, and card readers based on customer needs.

STEP 05.

Final Specification Confirmation and Production

Finalize the product's specifications based on customer requirements and initiate production.

STEP 06.

Delivery, Installation, and User Training

Once installation is complete, provide training on usage and functionality to ensure smooth operation.

Custom Kiosk References



T-Station (32Inch / Touch stand kiosk)



Lotte Rent a Car (43Inch / Touch stand kiosk)



Korea Development Bank (55Inch / Touch stand kiosk)



Chaeum Restaurant (75Inch / Interactive digital display)

CUSTOM SOLUTION DEVELOPMENT

We provide user interface and solution development services tailored to unique digital signage and kiosk functions. Custom solutions are created to optimize the layout and functionality to fit customer needs, ensuring continuous maintenance and updating as necessary.

Custom Solution Development Process

01

Customer Requirements Analysis

Collect customer feedback and requirements through meetings and Q&A sessions.



02

Design and Solution Development

Create the layout and UI based on requirements and develop the management system accordingly.



03

Storyboard Creation

Prepare detailed content plans and schedules based on the finalized design.



04

Additional Solution Development

Reflect customer feedback and make any necessary improvements.



05

Customer Feedback

Incorporate customer feedback into the final product and provide operational training.



06

Maintenance and Support

Provide continuous maintenance and support to ensure smooth operation of the solution.



Custom Solution References



Dongui University



Seoul Arts Education Center



Asan City Council



Seochang Library in Yangsan City



Chungbuk Natural Science Education Institute



Gwangmyeong Mental Health Center



Yongdang Elementary School



Gwangju Metropolitan City Hall

Digital Signage
Multi Vision & Video Wall
Kiosk
LED display
AI Eductaion System
Digital Signage Solution
Education Solution

SYSMATE Website
eng.sysmate.co.kr

SYSMATE Youtube
youtube.com/@sysmate546



SYSMATE Co., Ltd.

5F, SK TwinTower A, 119 Gasan Digital 1-ro, Geumcheon-gu, Seoul
TEL : +82-1833-9009 | E-mail : psb@sysmate.co.kr